



JONACOR  
YACHTS

2013 39.60 M  
M/Y DARLING

FNM 40

9 500 000 €

VAT Paid | Flag - Malta

TOP NAVAL DE MARIN

# FNM 40

2013  
M/Y DARLING

9 500 000 €  
VAT paid | Flag - Malta

## TECHNICAL FEATURES

---

Length overall  
129 ft 11 in (39.60 m)

Maximum beam  
26 ft 3 in (8.00 m)

Draft  
7 ft 10 in (2.40 m)

Displacement  
388 t

Fuel capacity  
65,982 l

Fresh water capacity  
10,243 l

Engines  
2 X MAN 735 Kw

Max/Cruising Speed  
14/12 kn



The company is not liable for validity of the information provided by the yacht-owner (images, specification of the yacht, list of equipment installed, its operability, engine hours, legal aspects).

Actual engine hours are indicated at the moment of initial information placement and gets further periodically updated. Detailed information and characteristics will be provided on buyer's request and indicated in the contract

# FNM 40

2013  
M/Y DARLING

9 500 000 €  
VAT paid | Flag - Malta



## Factoria Naval de Marin 40

This 40-meter three-deck luxury superyacht certainly is one of the best products of Factoria Naval de Marin. Steel hull and aluminum superstructure gives her maximum durability and seaworthiness. The boat was delivered in 2014 and received many positive reviews at the Monaco Yacht Show that year.

Exterior designed by Giorgio Vafiadis is stylish and recognizable, with pure lines and elegance. You will get a strong feeling of being onboard of much bigger yacht. Luxury yet laconic interior was created by Askdeco and recently renewed and upgraded by the present Owner. The size of the vessel allowed architects to create a spacious interior like in a magnificent modern style country house. Extensive glazing of public spaces adds a large amount of daylight. The use of mirrored ceiling panels makes interior even more individual and expands the onboard space.

The full-beam Upper Salon is a truly unique feature for a yacht this size. None of the other yachts in the category or bigger doesn't provide the same size for a second Salon. Spacious full-beam master stateroom is located on the Main deck and 4 other cabins are on the Lower deck, all with en-suite bathrooms. FNM 40 can accommodate up to 10 guests and 7 crew.

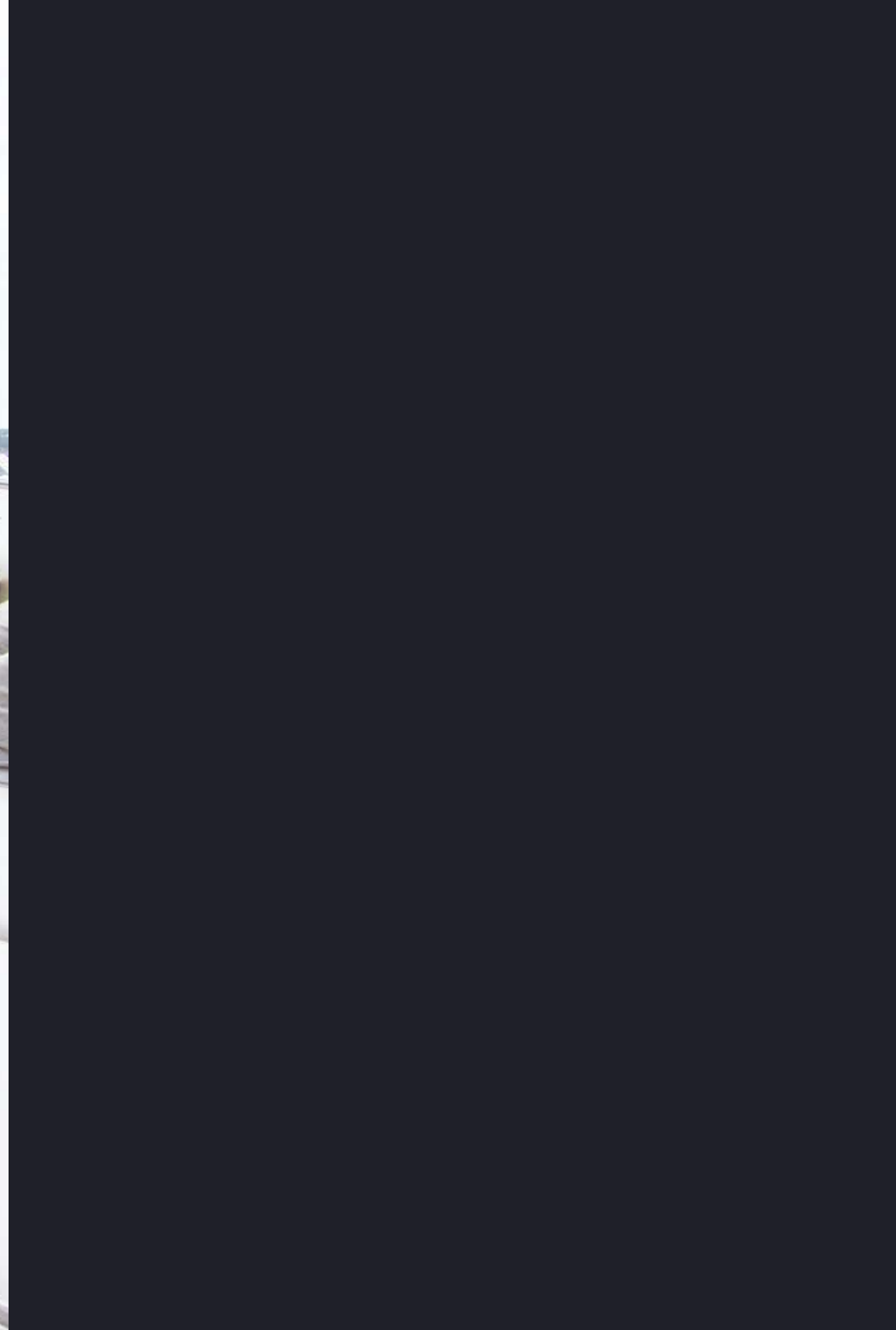
The yacht stands out with a magnificent huge sundeck incl. Jacuzzi and two massive sun cushions. She also has a big spacious garage for a 6 m tender and the toys. The cruising speed of this full displacement yacht Powered by two MAN diesel engines 1000hp each FNM 40 can reach a top speed in 14 knots with the cruising speed about 12 knots,. She is in perfect condition, all systems works great.



**FNM 40**

**2013**  
M/Y DARLING

**9 500 000 €**  
VAT paid | Flag - Malta



**FNM 40**

**2013**  
M/Y DARLING

**9 500 000 €**  
VAT paid | Flag - Malta





**FNM 40**

**2013**  
M/Y DARLING

**9 500 000 €**  
VAT paid | Flag - Malta



**FNM 40**

**2013**  
M/Y DARLING

**9 500 000 €**  
VAT paid | Flag - Malta





**FNM 40**

**2013**  
M/Y DARLING

**9 500 000 €**  
VAT paid | Flag - Malta



# FNM 40

**2013**  
M/Y DARLING

**9 500 000 €**  
VAT paid | Flag - Malta

## MAIN CHARACTERISTICS

BUILDER (OUTFITTING): FNM, marin, spain  
YEAR: 2013 (reg 2014) Refit 2022  
Loa: 39.6m  
Beam: 8m  
Draft: 2.3m  
Classification: BUREAU VERITAS PLEASURE  
Tonnage: 431  
Displacement: 388 tons

Cruising speed: 12 kn  
Cruising speed rpm: 1800  
Max speed: 14.1 kn  
Max speed rpm: 2100  
RANGE (on cruising): 2600 NMI

Fuel tanks #: 8  
Fuel tanks cap.: 65982 l  
Fresh water tanks #: 2  
Fresh water tanks cap.: 10243 l  
Holding tanks #: 4  
Holding tank cap.: 6094 l

## PROPULTION

Engine make: man  
Engine model: d-2842  
Primary engines: Inboard  
Drive type: Shaft drive

Engine: port  
Hours: 2074  
Power: 735 kw  
Propeller type: 5 blade

Engine: Starboard  
Hours: 2085  
Power: 735 kw  
Propeller type: 5 blade

## PERFORMANCE

Maximum speed 14 kts at 2,100 rpm / 290 l/hr  
Cruising speed 10 kts at 1,500 RPM / 200 l/hr  
Economical speed 7 kts at 1,200 RPM / 100 l/hr  
Range at cruising 2,600 nm  
Range at economic 4,600 nm

## MACHINERY

Gearboxes: 2x ZF 220  
Stabilizers: Wesmar Dynamic Stabilizers plus (underway)  
SIS - Stabtech Systems Static Stabilizers (zero speed)  
Generators: 2x 68 kW Kohler 70EFOZD  
Electricity: 230/380 V, 50Hz A/C / 24V DC Battery charger 40 amp/hr

Air conditioning: Condaria reverse cycle (300.000 BTU)  
Bowthruster: NV 70 kW  
Sternthruster: NV 50 kW  
Watermakers: (2) Aquamar watermaker 225 l/hr each  
Seawage system: Head Hunter  
Bilge oil separator: RWO Skit bilge separator 1 m3/hr  
Boilers: 2x 1,200 W  
Cleaning system: Alfa Laval

## GALLERY/LAUNDRU EQUIPMENT

2x Refrigerators  
2x Icemakers  
2x Freezers  
2x Bosch washing machines  
Oven  
2x Bosch dryers  
2x Microwaves  
Centralized vacuum cleaner  
Dishwasher  
Dumb waiter

## COMMUNICATION/ NAVIGATION & ENTERTAINMENT EQUIPMENT

2x Sailor SatComs TT300E  
Panasonic internal phone system TES824  
Sailor SSB System 5000 Simrad  
SART SAT-0141  
2x VHF Sailor RT-5022 Sailor  
Mini-C SSAS TT-3000  
3x VHF handheld Sailor JP-3520  
3G Router VDR-100G3  
Navtex ICS Nav 7





# FNM 40

2013  
M/Y DARLING

9 500 000 €  
VAT paid | Flag - Malta

## NAVIGATION EQUIPMENT

Simrad autopilot AP-50  
JRC depthsounder JFE-380  
Simrad plotter GB-40  
Simrad wind instruments IS-15  
Simrad radar RA-80/90  
Simrad gyrocompass MX-500  
Simrad radar RB-718A  
Simrad rudder indicator  
Simrad GPS GN-33 / CX-34

## ENTERTAINMENT EQUIPMENT

Samsung TV – All new (2022)  
TV's in upper saloon, owner's cabin and guest cabins  
TV in crew mes  
Satellite TV antenna, no receivers

## TENDERS & TOYS

Castoldy 6m. In the garage.

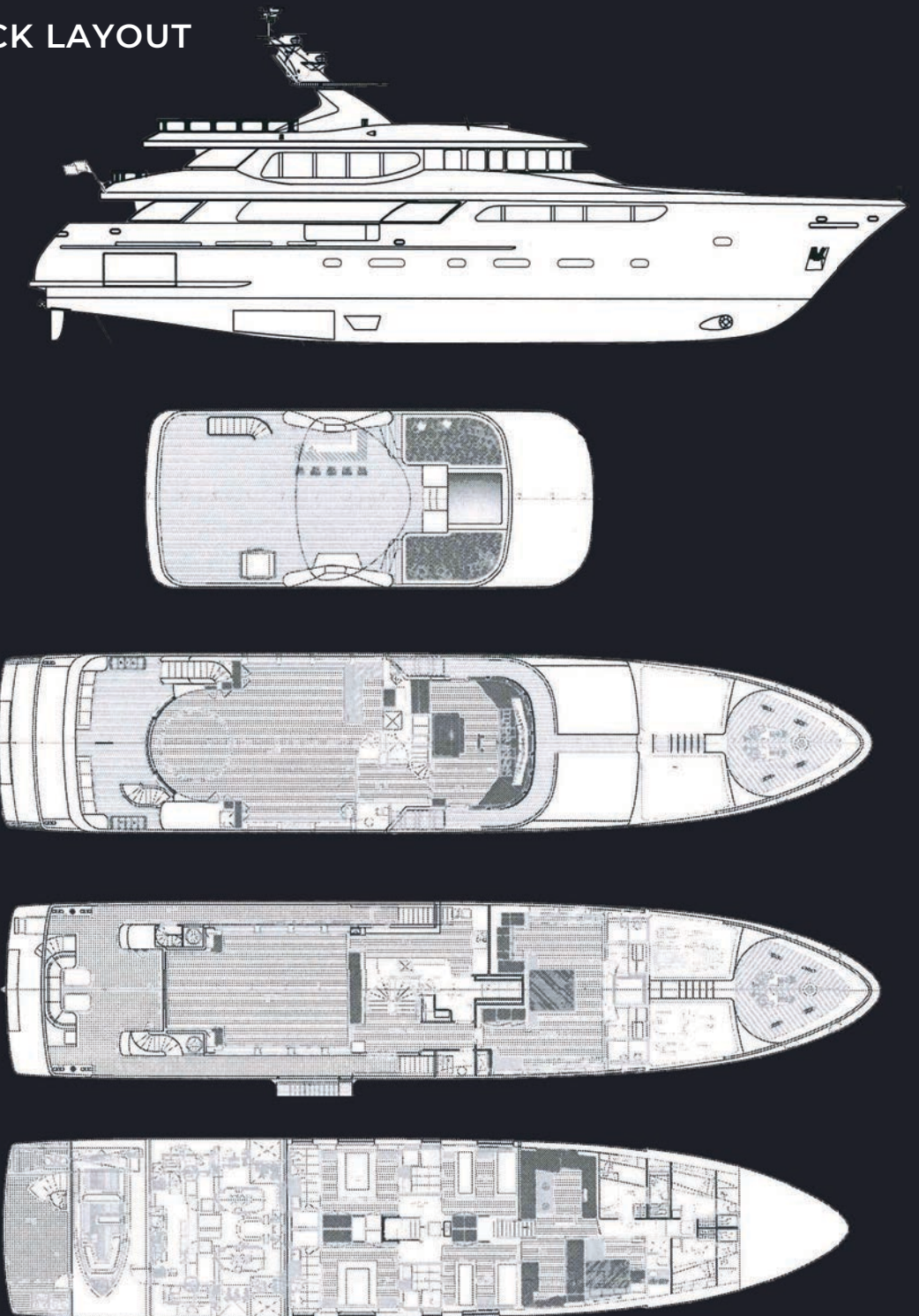
## DECK EQUIPMENT

2x Anchors 240 kg each. 2x 120 m anchor chain  
Electro-hydraulic stern gangway  
Electro-hydraulic side boarding ladder  
2x Carral anchor winch SV-17  
Underwater lights at stern  
2x Carral capstans MV-04  
Search light  
SWL Crane in main garage (1 Ton  
Horn  
2x Cranes in bow garages (500 kg)

## SAFETY & SECURITY EQUIPMENT

2x RFD life rafts for 20 persons each  
Vigotronica alarm system  
Fire control system Marinelec FM200  
Simrad EPIRB  
Ultrafog fire extinguishers  
Throughout Closed circuit TV

## DECK LAYOUT





CALL US

+357 97 836948

+49 17 699273946

EMAIL US

[office@jonacor-yachts.com](mailto:office@jonacor-yachts.com)

[sales@jonacor-yachts.com](mailto:sales@jonacor-yachts.com)



OUR OFFICES

Cyprus, Limassol

UAE, Dubai

Germany, Düsseldorf

Spain, Madrid

Spain, Marbella

Montenegro, Budva

USA, Miami



OLGA REBHEIN

Yacht Broker

